



Seasons Greetings St. Louis Metro Area University of Illinois Alumni and Illini Fans on Both Sides of the River!!



Here's a little information about who we are and what we do...

What is the St. Louis Illini Club? The St. Louis Illini Club (SLIC) is an organization for alumni, friends, and fans of the University of Illinois that sponsors a variety of social, cultural and service, and sports-related events. With support from the University of Illinois Alumni Association, we were busy in 2002 promoting the Orange and Blue spirit throughout the St. Louis metro area and wanted to take a few minutes to tell you what we've been up to, as well as some of the exciting events that you're invited to participate in.

A little history...The SLIC was issued a charter by the University of Illinois Alumni Association in November 1955, and began operation in 1956 with a full slate of officers. The first president was Stanley L. Bodman '31. Current Past-President, John Butler, served the club for more than a decade. The SLIC has seen varying degrees of activity throughout the years and serves hundreds of area alumni and fans who maintain membership each year.

Who joins the St. Louis Illini Club? Typically, our members are University of Illinois alumni and fans who live in the metropolitan St. Louis area. We draw from over 10,000 alumni and fans who reside on both sides of the Mississippi River. We have club members from the City of St. Louis, St. Louis County, Jefferson County, Franklin County, and St. Charles County in Missouri. We also have members who reside in the inactive Southwestern Illinois Club areas of Monroe County, St. Clair County, and Madison County in Illinois.

In the late 1990's, the Southwestern Illinois Club developed on the east side of the River, but is now inactive. This club may eventually resurface to serve Illinois alumni and fans in the Metro East, but until then, we will reach out to Illinois Alumni and fans on both sides of the River in a regionalized approach.

What are my dues used for? The dues primarily go towards our scholarship program, with small amounts used to help defray mailing costs. From the dues collected, our Scholarship committee reviews applications and award scholarships to incoming freshmen at the University of Illinois.

A special thank you for your generosity and interest in being dues-paying SLIC members in 2002! Through the Alumni Association, we awarded one \$1,000 scholarship each to Shannon O'Brien and Rachel Shenker who started their freshman year in Fall 2002. We hope to increase our awards through this important program in the years to come. Eventually, we'd like to exceed the Washington D.C. Club's record of EIGHT annual scholarships! Also, to help with studying for finals, Rachel and Shannon recently received care packages.



Upcoming 2003 Events

Game Watches - Remember that for most televised Illini men's football and basketball games, you can join your fellow Illini fans at our official game watch location, Maggie O'Brien's near Union Station, before, during, and after the games! The primary reason for this location is that it is centrally located to those who reside in both Missouri and Illinois. We have searched high and low for a game watching location that is owned by an Illinois alumnus, without any luck. Therefore, we will continue our relationship with Maggie O'Brien's throughout the remainder of the 2002-2003 school year. Tune in to 880AM or 1190AM for Illini sports and the Monday night coach's show!

More information on the following exciting and timely events will be forthcoming in separate mailings to SLIC members and those who express interest. Information will also be posted on our website www.stlouisillini.org as event details are worked out.

AIDS Walk 2003 – Saturday, April 12, 2003 – The SLIC is forming teams to participate in two charity walks in the coming year. The first, AIDS Walk St. Louis, is scheduled for Saturday, April 12th in Kiener Plaza downtown St. Louis. This walk, presented by The AIDS Foundation of St. Louis, raises funds for AIDS-related organizations serving the metropolitan St. Louis area, including the metro east. The organizations they fund include those who provide medical, food, and housing assistance for those infected with HIV/AIDS, as well as organizations who provide services to children infected and affected by AIDS. 100% of the money raised from this walk stays in the St. Louis area.

Springtime Gardening Expo We are scheduling a speaker for late April or May to discuss gardening tips and techniques just in time for the 2003 planting season.

Illinois vs. Mizzou College Baseball Game - May 6, 2003 The two college baseball teams will be playing each other in an official game at the T.R. Hughes Ballpark in O'Fallon, MO.

Komen St. Louis Race for the Cure – Saturday in June 2003 – The second charity walk the SLIC will sponsor is the Komen St. Louis Race for the Cure. This walk raises funds for breast cancer research, education, screening and treatment. 75% of the net proceeds stay in metro St. Louis. The remaining 25% supports the Susan G. Komen Breast Cancer Foundation's National Grant Program for breast cancer research.

Illini Night at Busch Stadium - Summer 2003 - Don't miss the annual "Illini Night at Busch Stadium" festivities at the ballpark as an Illinois Head Coach throws out the ceremonial first pitch. Rumor has it that the 2003 Illini Night will be a rivalry night with local Mizzou alumni and fans.

Illinois vs. Missouri football game at the Edward Jones Dome - August 30, 2003 - The St. Louis Illini Club will once again sponsor the official pre-game Pep Rally. Free admission to the pre-game activities starts about 2 hours before kickoff. The Marching Illini and cheerleaders will be there. There will be food and drinks available for purchase, so you can eat lunch at the Pep Rally. More information will be provided on the website and at Illini Night at Busch Stadium. **IN ADDITION TO YOUR OWN TAILGATING ACTIVITIES, PLEASE JOIN US FOR THE PEP RALLY SINCE IT IS THE PERFECT CHANCE TO SHOW THAT ST. LOUIS IS NOT JUST A BIG XII TOWN!**



Keep this page as an events reminder

Our Club Logo - Take a look at our award-winning logo above that you see on almost everything we do (website, mailings, clothing, etc.). Reasonably-priced merchandise (polo shirts, hats, etc.) is available for purchase with our embroidered logo at upcoming events.

Officers and Committees - The SLIC has organized Scholarship, Membership, Publicity, and Programs Committees. If you are interested in participating on a committee or helping out with an event, please let us know via email or phone, or sending us a note with your membership form. We plan to have monthly meetings in 2003.

Current SLIC members only need to send in their name and any address changes with their dues, including new email addresses or phone numbers. If you submitted your dues since November 1, 2002, your “account” will be credited as paid for 2003.

If you have any questions, please feel free to contact us.

2003 Club Organization and Committee Chairs

| | | |
|--|---------------------|--|
| Deron Huck – President | (314)421-0313, x238 | deronhuck@illinoisalumni.org |
| Roland Thomas - VP/Scholarships | (314)641-4375 | rothomas@deloitte.com |
| Matt Helms – Secretary/Membership | (314)749-3544 | mjhelms@yahoo.com |
| Jim Malik – Treasurer | (314)521-0682, x221 | jimmalik@msn.com |
| John Butler - Past President | (314)290-3333 | john_butler@rbq.com |
| Amy Bugg - Programs Chair | (314)746-1971 | bugga@osborn-barr.com |
| April Gray - Community Service Coordinator | (314)367-7273 | aprilleegray@hotmail.com |
| Jay Sinclair - Events Co-Chair | (314)393-6225 | jaysinclair11@hotmail.com |
| Jason Raak - Events Co-Chair | (314)579-7219 | jason.raak@lighting.qe.com |
| Steve Roth – Director | (314)955-4543 | roths@core.com |
| Jim Duckwitz – Director | | jim_duckwitz@yahoo.com |
| Trisha Moore (Frontierix) - Webmaster | | trisha@frontierix.com |



St. Louis Illini Club 2003 Membership Form

| | |
|--|--|
| Name: | Spouse's Name |
| Employer: | Employer: |
| Work Address: | Work Address: |
| City, State, Zip | City, State, Zip |
| Work Phone #: | Work Phone #: |
| Major/Degree at U of I: | Major/Degree at U of I: (if applicable) |
| Year Graduated from U of I: | Year Graduated from U of I: (if applicable) |
| Preferred E-mail: | Preferred E-mail: |
| Home Address: | Home Phone #: |
| City, State, Zip | # of Current SLIC Members in Household: |
| Interested in serving on a committee: Yes / No | Interested in serving on a committee: Yes / No |

To join the SLIC or renew your membership, please fill out the attached information or the online form, and send us your check payable to “St. Louis Illini Club”.

2003 membership is \$10 per family, and FREE to those within 3 years of graduation (i.e., 2000, 2001, and 2002). You are also encouraged to contribute an additional \$5, \$10, or more to help our scholarship fund!

Send Form and Check to:
 Deron Huck
 St. Louis Illini Club
 727 North First Street
 Suite 400
 St. Louis, MO 63102-2542

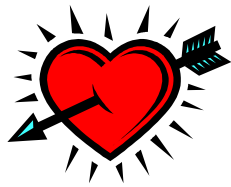
Note: Information above will be used only for SLIC purposes.



**Winter/Spring 2003
Newsletter and
Membership Flyer**

**Look Inside for
Important Information
about Exciting
Upcoming Club Events!**

**2002 Winner 110% Award for the
Best Club Logo Award!**



**University of Illinois Alumni Association
227 Illini Union, 1401 W. Green St.
Urbana, IL 61801**

Non-Profit Org.
US Postage Paid
Permit #75
Champaign, IL